



## ABBOTTS COURT, EVERSLEY PARK, CHESTER

£895 PCM

- AVAILABLE IMMEDIATELY
- REDECORATED THROUGHOUT
- NEW FLOORING
- TWO DOUBLE BEDROOMS
- WITH APPLIANCES
- ALLOCATED PARKING

**urbansale&let**  
property sales and letting





# ABBOTTS COURT, EVERSLEY PARK, CHESTER

2 2 1  
BED BATH RECEPTION

FULL DESCRIPTION Urban Let are delighted to offer for let this superb ground floor apartment. Conveniently located for access into the city centre, the property is unfurnished and well-presented throughout have just been redecorated throughout and new flooring fitted.

The accommodation comprises entrance hallway with storage cupboards, a very spacious lounge which is open plan and incorporates a modern fitted kitchen with integrated oven, hob, dishwasher, washing machine and free-standing fridge/freezer, two double bedrooms both with built in wardrobes, master with en-suite shower room and main bathroom.

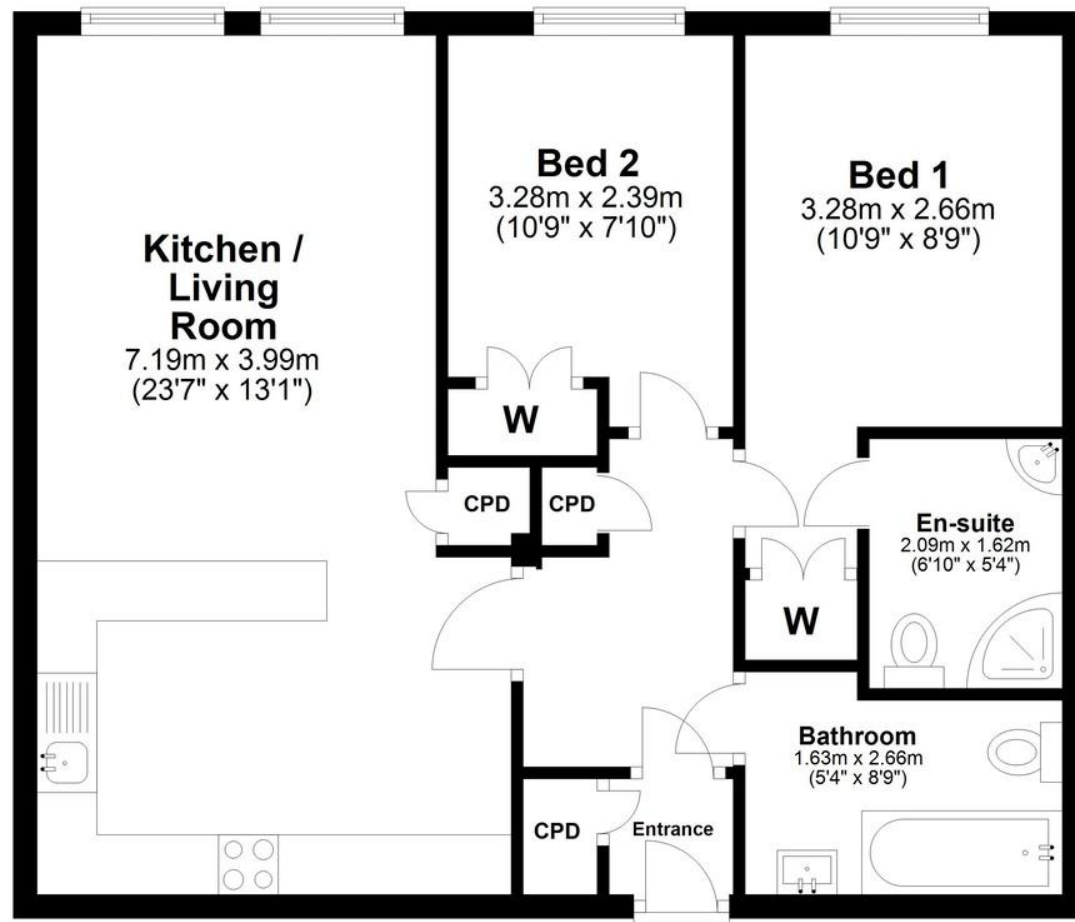
Allocated parking for one car and communal landscaped garden to the rear.

Leasehold covenants apply. EPC rating C & council tax band C. Sorry, no pets, no smokers.





## Apartment



### TOTAL FLOOR AREA

601 sq ft / 56 sq m

**COUNCIL TAX**  
Band C

**AVAILABLE FROM**  
Available Now

**DEPOSIT**  
£1,032.69

**FURNISH**  
Unfurnished

**EPC**

Score	Energy rating	Current	Potential
92+	A		
81-91	B		
69-80	C	79 C	79 C
55-68	D		
39-54	E		
21-38	F		
1-20	G		

### OFFICE CONTACT INFO

Urban Sale and Let  
19 Charles Street  
Hoole  
Chester  
Cheshire  
CH2 3AY

01244 886 636  
info@urbansaleandlet.co.uk  
www.urbansaleandlet.co.uk

2 Abbots Court Eversley Park

Every effort has been made to ensure the accuracy of these details; however, they are provided for guidance only. All measurements are approximate and should not be relied upon.

Prospective buyers are encouraged to verify the measurements independently.