



29 WILLIAM WILD DRIVE, CHESTER

£375,000

-
-
-
-
-
-

29 WILLIAM WILD DRIVE, CHESTER, CH1



Welcome to this charming recently extended property located on William Wild Drive in the picturesque village of Mollington, Chester. This stylish semi-detached house boasts plenty of living space for any modern day buyer. Situated on a good-sized plot, this home is perfect for those looking for a blend of modern living and village charm. The stunning open plan kitchen/family room is ideal for entertaining guests or enjoying quality time with family. With its prime location in the heart of Mollington village, you'll have easy access to local amenities, schools, and beautiful countryside walks. This property truly offers the best of both worlds - a peaceful village setting with the convenience of urban facilities just a stone's throw away. Chester city is around a 10 minute car journey away.

enjoy the al fresco lifestyle. VIEWING ESSENTIAL!

In brief the ground floor benefits from hallway, utility room, lounge with log burner, downstairs W/C, study/sitting room and a most impressive open plan kitchen/family room/dining room with built in appliances. The first floor benefits from storage, an on-trend family bathroom and three good sized bedrooms, one of which offers an en suite shower room. Outside, there is off road parking to the front. The rear garden has been beautifully landscaped and is mainly laid to lawn with storage and seating areas ideal for those who

29 WILLIAM WILD DRIVE, CHESTER, CH1 6PP



Council Tax:

Band E

Local Authority:

Cheshire West and Chester

29 WILLIAM WILD DRIVE, CHESTER, CH1 6PP

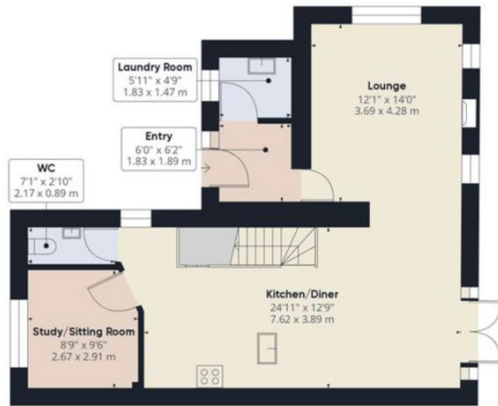


Total Floor Area:
1,263 sq ft / 117 sq m

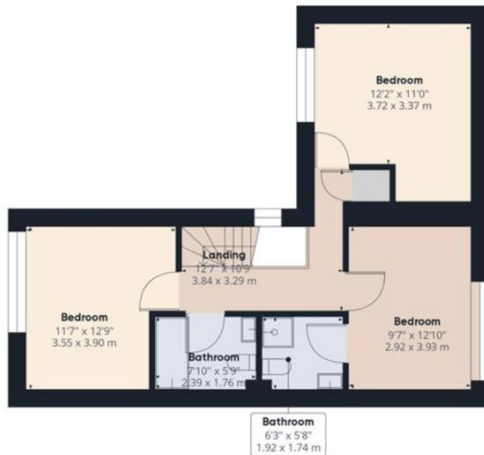
Viewings:
By prior appointment with the agent

29 WILLIAM WILD DRIVE, CHESTER, CH1 6PP





Ground Floor



Floor 1

Score	Energy rating	Current	Potential
92+	A		
81-91	B		91 B
69-80	C	78 C	
55-68	D		
39-54	E		
21-38	F		
1-20	G		

OFFICE CONTACT INFO

Urban Sale and Let
 19 Charles Street
 Hoole
 Chester
 Cheshire
 CH2 3AY

01244 886 636
 info@urbansaleandlet.co.uk
 www.urbansaleandlet.co.uk

Agents Note: Whilst every care has been taken to prepare these particulars, they are for guidance purposes only. All measurements are approximate, and are for general guidance purposes only and whilst every care has been taken to ensure their accuracy, they should not be relied upon and potential buyers/tenants are advised to recheck the measurements