

VICKERS WAY, BROUGHTON

£230,000

- THREE BEDROOMS
- EN SUITE MASTER
- DRIVEWAY
- OPEN PLAN KITCHEN/LIVING AREA
- CLOSE TO AMENITIES
- MODERN INTERIOR

2 VICKERS WAY, CHESTER, CH4 0FX



Welcome to this impressive modern home located on Vickers Way in the popular area of Broughton, Chester. This delightful house offers a stylish open-plan layout, perfect for modern living. Situated conveniently across the road from the bustling Broughton Retail Park, you'll have all your shopping and entertainment needs right at your doorstep. Despite this proximity, the property is cleverly tucked away. The ground floor benefits from hallway, Downstairs W/C, storage and an impressive open plan kitchen/diner/lounge with patio doors taking you out to the rear garden. This is the perfect spot for entertaining. The first floor benefits from a family bathroom, storage and three bedrooms, the master offering an en-suite shower room. One of the highlights of this property is its private rear garden, providing you with a lovely outdoor space to relax and entertain. The house itself is not only modern but also ready for you to move in without any hassle. The stylish interior is sure to impress, offering a contemporary living space that is both comfortable and inviting. Don't miss out on the opportunity to make this wonderful house your home. Contact us today to arrange a viewing and envision yourself living in this fantastic property on Vickers Way.



2 VICKERS WAY, CHESTER, CH4 0FX



Council Tax:

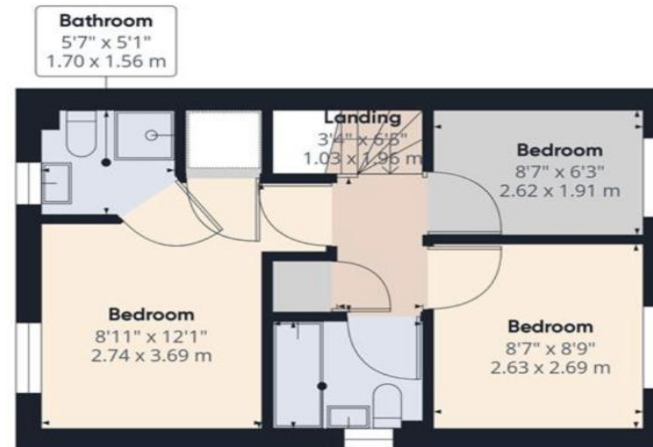
Band D

Local Authority:

Flintshire County Council



Ground Floor



Floor 1



Score	Energy rating	Current	Potential
92+	A		95 A
81-91	B	82 B	
69-80	C		
55-68	D		
39-54	E		
21-38	F		
1-20	G		

OFFICE CONTACT INFO

Urban Sale and Let
19 Charles Street
Hoole
Chester
Cheshire
CH2 3AY

01244 886 636
info@urbansaleandlet.co.uk
www.urbansaleandlet.co.uk

Agents Note: Whilst every care has been taken to prepare these particulars, they are for guidance purposes only. All measurements are approximate, and are for general guidance purposes only and whilst every care has been taken to ensure their accuracy, they should not be relied upon and potential buyers/tenants are advised to recheck the measurements